

ASM GRAPH series

Multipurpose Helium Leak Detectors



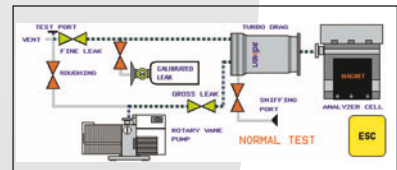
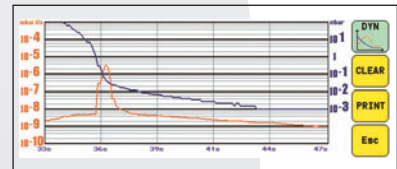
THE NEW INTERFACE OPERATOR GENERATION

It has never been so easy to leak detect

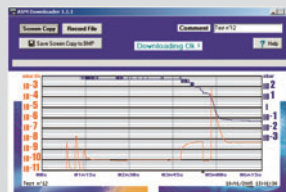
The ASM Graph series not only provides a touch screen graphic display with colorful screen and graphs. You can now visualize and record the evolution of the helium signal,

the inlet pressure and set points via color graphs. Further, you can enjoy the touch panel for quicker parameter settings, check the pressure inside the mass spectrometer or follow the status of the leak detector main components by enjoying the dynamic vacuum diagram.

- Basic and Advanced modes
- Measurement function
- Zoom function
- Screen copy
- Dynamic vacuum diagram
- Recording capability
- ASM downloader



VACUUM ALARM
 REJECT POINT: $1.0E-07$ → VALIDATE RESET
 SNIFFING ALARM
 REJECT POINT: $1.0E-04$ ← - + NEXT



Phase	Time(s)	Pressure (mbar)	Leak Rate	Leak Point
Start	0	1.0E-07	1.0E-07	
Start	10	5.0E-08	1.0E-07	
Start	20	5.0E-08	1.0E-07	
Start	30	5.0E-08	1.0E-07	
Start	40	5.0E-08	1.0E-07	
Start	50	5.0E-08	1.0E-07	
Start	60	5.0E-08	1.0E-07	
Start	70	5.0E-08	1.0E-07	
Start	80	5.0E-08	1.0E-07	
Start	90	5.0E-08	1.0E-07	
Start	100	5.0E-08	1.0E-07	
Start	110	5.0E-08	1.0E-07	
Start	120	5.0E-08	1.0E-07	

Interfacing with the leak detector is easier than ever with the ASM Graph, the memo function and the ASM downloader software.



Effective for any industrial application

Maintenance applications of vacuum systems

- research and development
- cryogenic
- aerospace industry
- industries which use vacuum process

Quality control of components

- instrumentation (sensors)
- mechanical industry (seals, valves, various small pieces)

Outboard testing of pressurized parts (sniffing test mode)

- refrigeration
- air-conditioning



Technical features information

Specifications	ASM Graph	ASM Graph D
Minimum detectable helium leak	1.10 ⁻¹¹ atm.cc/sec	1.10 ⁻¹¹ atm.cc/sec
Maximum inlet test pressure	10 mbar	10 mbar
Helium pumping speed at the inlet of the unit	1.3 l/s	1.3 l/s
Roughing capacity	10 m ³ /h	1 up to 18 m ³ /h
Start-up time (including auto-calibration)	< 3 min.	< 3 min.
Weight	56 kg (123 lbs)	42 kg (92 lbs)

Integrated functions

- Auto-calibration, with built-in temperature compensated calibrated leak
- Full automation of test cycle including:
 - cycle sequence
 - memorization of the last test
 - test result display
- Helium background suppression with "floating" zero to keep the signal from going negative.
- Automatic external calibration
- Helium clean-up device
- Audio alarm with variable pitch (up to 90 dBA)
- Vocal synthesizer

Dimensions

510 x 343 x 428 mm
20.1 x 13.5 x 16.8 inch

Options and accessories

- metal seals
- interface board
- transport cart
- remote control
- sniffer probe

Alcatel Vacuum Technology France
98, avenue de Brogny - BP 2069 - 74009 ANNECY CEDEX - FRANCE - Tel.: (33) (0) 4 50 65 77 77 - Fax: (33) (0) 4 50 65 77 89
www.adixen.com

An Alcatel-Lucent Company

China
Alcatel Vacuum
Technology Shanghai
Tel: (8621) 5027 0628
Fax: (8621) 3895 3815

France
Alcatel Vacuum
Technology France
Tel: (33) 04 50 65 77 77
Fax: (33) 04 50 65 77 89

Germany
Alcatel Hochvakuum
Technik GmbH
Tel: (49) 9342 96 10 0
Fax: (49) 9342 96 10 30

Italy
Alcatel Vacuum
Systems S.p.A.
Tel: (39) 039 686 3855
Fax: (39) 039 667 125

Japan
Alcatel-Lucent Japan
Tel: (81) 44 797 5920
Fax: (81) 44 797 5932

Korea
Alcatel Vacuum
Technology Korea
Tel: (82) 31 206 6277
Fax: (82) 31 204 6279

Netherlands
Alcatel Vacuum
Technology Netherlands
Tel: (31) 345 478 400
Fax: (31) 345 531 076

Singapore
Alcatel Singapore Pte Ltd
Tel: (65) 6254 0828
Fax: (65) 6254 7018

Sweden
Adixen Sensistor AB
Tel: (46) 13 35 59 00
Fax: (46) 13 35 59 01

Taiwan
Alcatel Vacuum
Technology Taiwan
Tel: (886) 3 5599 230
Fax: (886) 3 5599 231

United Kingdom
Alcatel Vacuum
Technology (U.K.)
Tel: (44) 1 506 418 000
Fax: (44) 1 506 418 002

USA
Alcatel Vacuum
Products
Tel: (1) 781 331 4200
Fax: (1) 781 331 4230